

### Key Benefits

- Use your existing Kofax system to seamlessly integrate into SAP
- Increased logging to identify any issues with the storage of metadata and documents
- Supports any SAP vendor name space function module including OpenText and Readsoft
- Supports the formatting of released data with customer defined scripts
- Uses SAP's native ArchiveLink interface

### Success Stories

- A global automobile manufacturer used the Verbella Kofax Export Connector for SAP to Integrate into their highly customized SAP Accounts Payable Solution and the SAP Content Server.
- A large Insurance company, an existing user of Kofax Capture Globally, implemented OpenText's VIM solution for Accounts Payable, without having to retrain their employees on a new platform.

## Verbella Export Connector for SAP

### Overview

The Verbella Export Connector (VEC) allows Kofax customers to seamlessly integrate captured data and documents into SAP. While utilizing the native SAP ArchiveLink functionality to dynamically link the metadata to the image stored in an ArchiveLink compliant repository. Supported applications include the Kofax Capture and ReadSoft Process Director Solutions, the OpenText Document Access Solutions for SAP and the OpenText Vendor Invoice Management (VIM) Solution for SAP. The export connector supports all the standard SAP Archiving Scenarios, and includes the required transports. The export connector can also be used to call any custom Function modules created in SAP and can be used for any module in SAP as well as SAP versions 4.7 through ECC 6.0.

### Late Archiving - Included

Included in the base transports is Late Archiving in SAP. It allows users to manually insert metadata into SAP stores the scanned documents in a compliant repository to the business object in SAP, after the related transaction has been completed.

### Late Archiving with Barcode - Included

Also included in the base transports is Late Archiving with Barcode. Users enter a barcode number when processing or posting a transaction in SAP. The documents are then scanned and exported to an ArchiveLink certified repository and the image is linked to the SAP business transaction via the barcode number.

### Early Archiving - Included

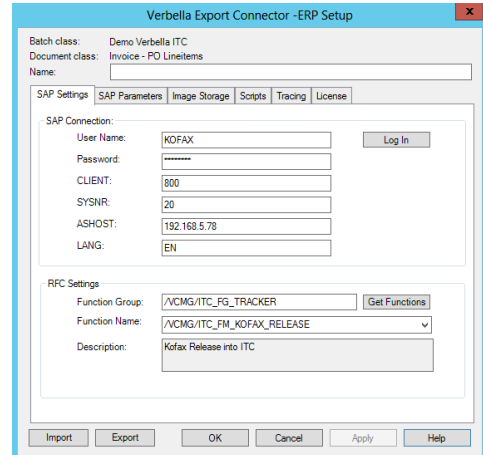
A simple Workflow based on the Standard Early Archiving scenario in SAP, used to create work items that terminate with the posting or parking of an SAP accounting document. These work items contain the image and the extracted metadata passed from Kofax Transformation Modules that can be then used to auto post, auto park or just to pre-fill the transaction in SAP.

### Custom Tables-Including Document Access

Custom tables containing metadata and related document(s) can be populated with metadata from Kofax, and records created or updated and images archived via ArchiveLink.

### Custom Function Modules

Any Remote Enabled Function Module can be created and called from the Verbella Export Connector for ERP. This is typically used to interface with OpenText’s VIM, Lexmark/Readsoft Invoices, or the Verbella Invoice Tracking Center.



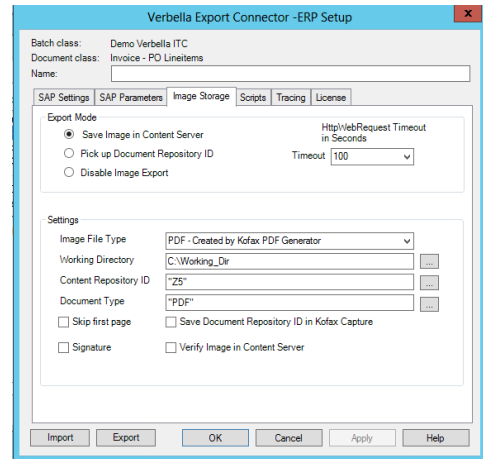
SAP Logon, Server Destination and the Function Module Settings

### Services and Support

All the solutions are supported by Verbella and most can be remotely implemented in 1 – 3 days.

### Technical Specifications

- Uses ArchiveLink and supports the use of Signatures
- Supports the SAP HTTP Content Server or any other ArchiveLink Certified content storage solution.
- SAP 4.7 and SAP ECC 6.0 are supported
- All Modules in SAP are supported
- Transports were created using the Verbella name space in SAP /VCMG
- Makes use of SAP .NET 3.0 connector, No COM Objects
- Kofax Capture 9.x and 10.x versions are currently supported
- Real-Time scripting using native .NET for formatting
- Allows for the export and import of Export configuration settings
- Supported Output formats includes, Multipage TIFF, and Searchable PDF
- 100% developed and supported by Verbella



Configuration of ArchiveLink Settings

Table Links: Z_ROWKEYVALUE						
Link Setup						
Name	Value	Table	Description	Type	Length	Format Script
EBELN	@Order Number	Z_ROWKEYVALUE	User defined parameter	Char	255	
EBELP	@PO Item Number	Z_ROWKEYVALUE	User defined parameter	Char	255	
MATNR	@Article Code	Z_ROWKEYVALUE	User defined parameter	Char	255	
MEINS	@Unit Measure	Z_ROWKEYVALUE	User defined parameter	Char	255	
MENGE	@Quantity	Z_ROWKEYVALUE	User defined parameter	Char	255	Format Amount
NETPR	@Unit Price	Z_ROWKEYVALUE	User defined parameter	Char	255	Format Amount
WRBTR	@Total Price	Z_ROWKEYVALUE	User defined parameter	Char	255	Format Amount

Metadata field mapping at the line item level